

Premises and Facilities

Moe Criteria states;

PF17 Kitchen and cooking facilities or appliances are designed, located or fitted with safety devices to ensure that children cannot access them without adult assistance or supervision.





ADULT WOKING SPACE

The MOE Criteria:

PF9 There is space for adults working at the service to:

- Use for planned breaks

- Meet privately with parents and colleagues;
- Store curriculum support materials and
- Assess plan and evaluate



NKA Comment: We are committed to providing separate adult lunch break room for all kindergartens operating with 6hr+ sessions.

FOOD PREPARATION AND EATING SPACES

P16 There are facilities for the hygienic preparation, storage and serving of food and drink that contain:



Storage of Equipment

The Moe Criteria:

PF8 There are sufficient spaces for equipment to be stored safely. Stored equipment and materials can be easily and safely accessed by adults and where practicable by children.



Furniture Equipment and Surfaces

The Moe Criteria:

PF4 A sufficient quantity and variety (of indoor and outdoor) furniture, equipment, and materials is provided that is appropriate for the learning and abilities of the children attending.

PF5 All indoor and outdoor items and surfaces, furniture, equipment and materials are safe and suitable for their intended use.





TE KĒMU KETE

Māori Language Learning Made Fun

Four kai (food)
groups
40 different
kai



Ages 4-7
2-4 Players



Enhance memory skills
Encourage te reo Māori

©-2 years
This product is not suitable
for children under three years
of age or for children with small parts.



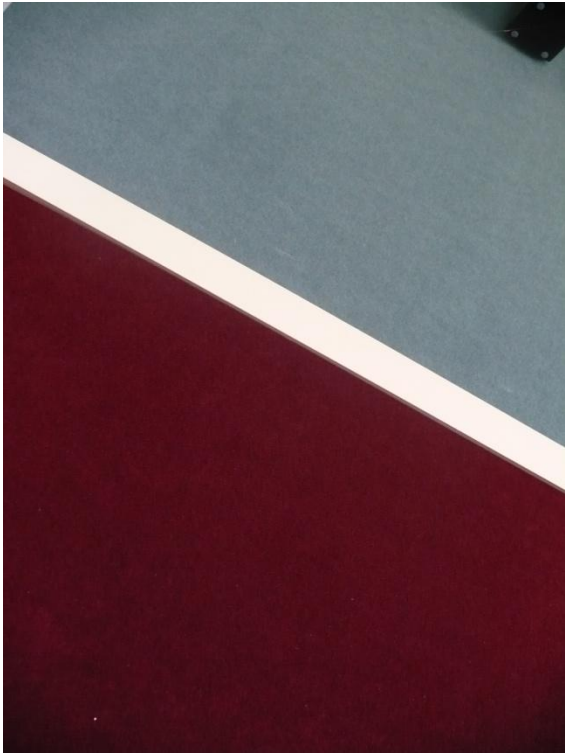
LIGHTING VENTILATION NOISE

PF12 Parts of the Buildings used by children have:

- Lighting (natural or artificial) that is appropriate to the activities offered or purpose of each room
- Ventilation (natural or mechanical) that allows fresh air to circulate (particularly in sanitary and sleep areas);
- A safe and effective means of maintaining a room temperature of no lower than 16 degrees C and
- Acoustic absorption materials if necessary to reduce noise levels that may negatively affect children's learning or well being



NKA Comment; We have a programme of installing autex wall coverings in all play areas to reduce noise levels and increase warmth.



NKA Comment: We value the use of natural light in our kindergartens and strive for both comfort and aesthetic appeal.



NKA comment: All of our Kindergartens are fitted with high quality heat pumps to stabilise both hot and cold temperature.



NKA Comment: We are committed to providing ample shade in our outdoor areas by way of shade sails, verandahs and trees.



NKA Comment: An example of a noise monitoring tool to help educate children and staff about noise levels – red sign comes on when noise reaches too high a decibel level.

FENCES AND GATES

The Criteria states:

PF13 Outdoor activity space is:

Enclosed by structures and/or fences and gates designed to ensure that children are not able to leave the premises without the knowledge or adults providing education and care;



The Criteria States:

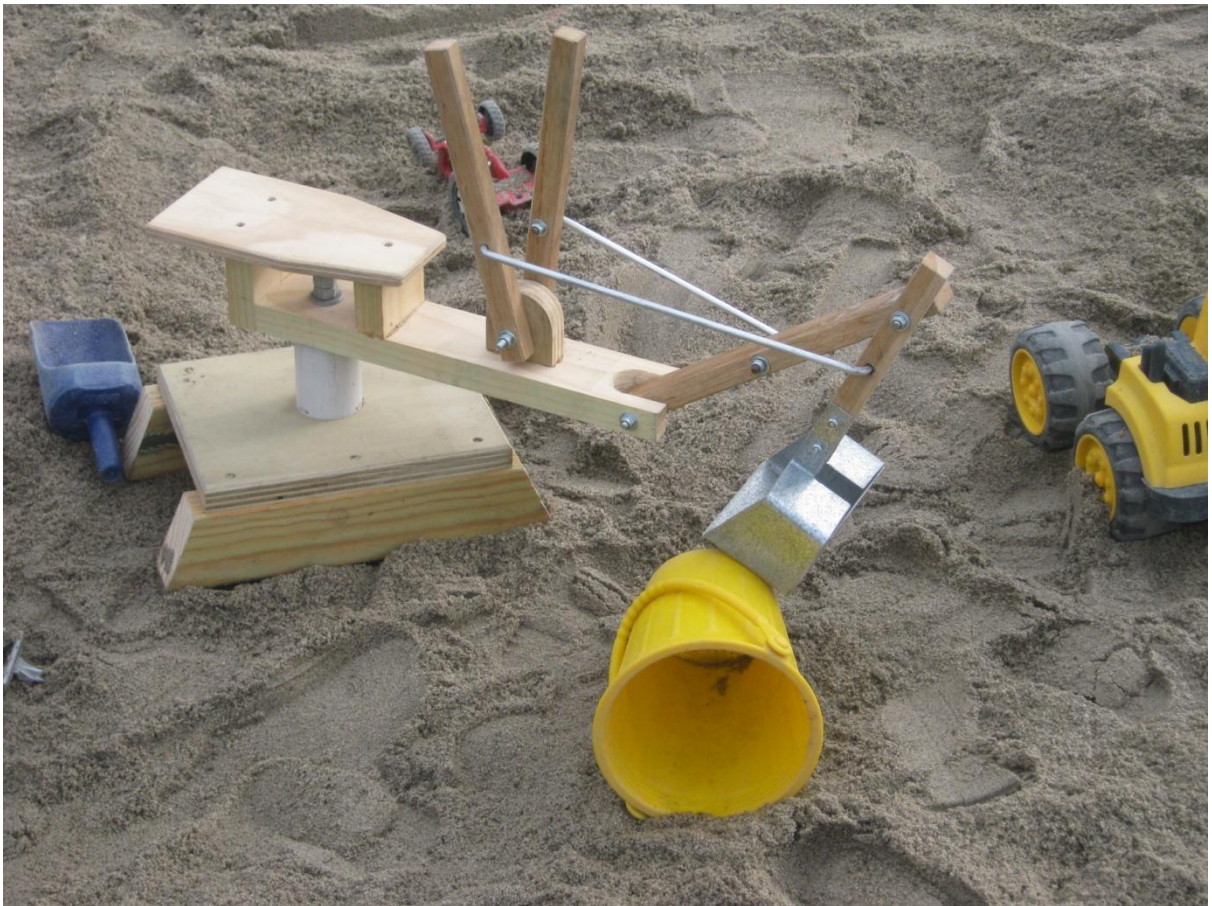
PF 13 Outdoor activity space is;

- Connected to the indoor activity space and can be easily and safely accessed by children
- Safe well drained and suitably surfaced for a variety of activities
- Available for the exclusive use of the service during hours of operation





*NKA Comment; We value children's access to the natural outdoor environment
Our setting place a high value on natural space grass, established trees and
native plantings.*



TOILET AND HANWASHING FACILITIES

The Criteria states:

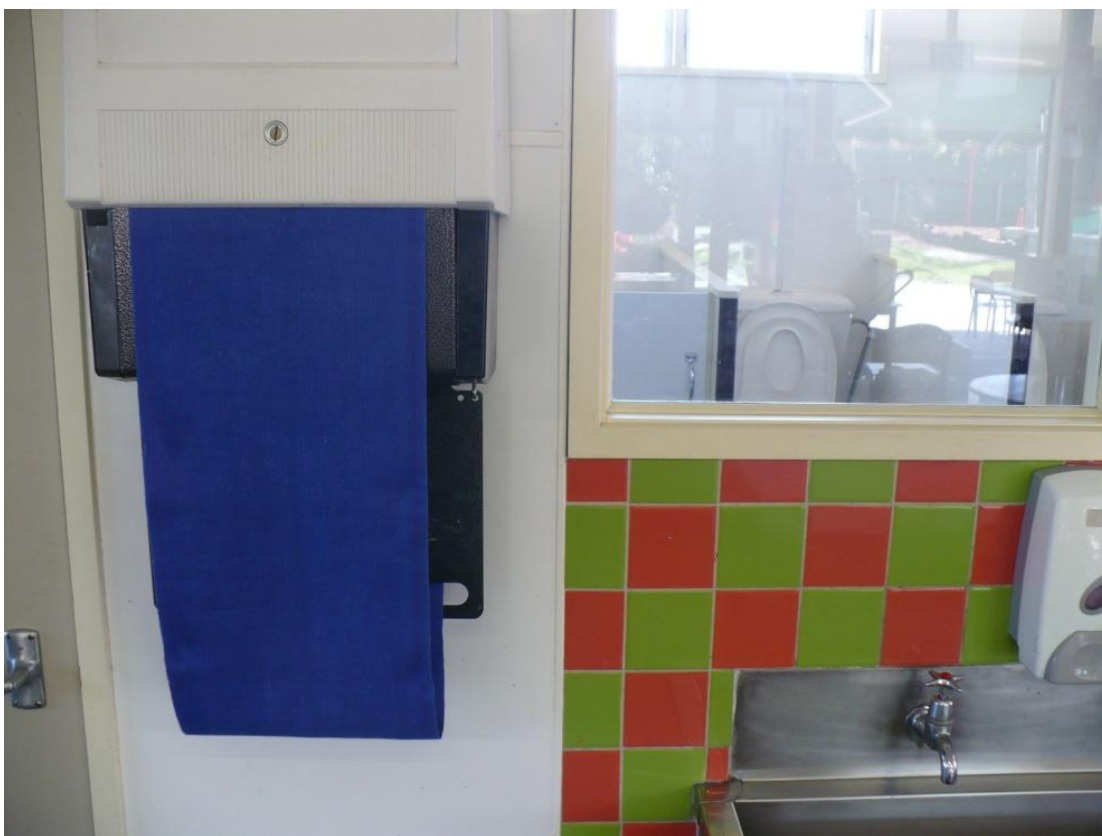
PF20 Toilet and associated handwashing/drying facilities intended for use by children are:

Designed and located to allow children capable of independent toileting to access them safely without adult help; and

Adequately separated from areas of the service used for play or food preparation to prevent the spread of infection

PF21 There is a means of drying hands for children and adults that prevents the spread of infection

PF 22 At least one of toilets for use by children is designed to provide them with some sense of privacy.







NAPPY CHANGING FACILITIES

Moe Criteria states:

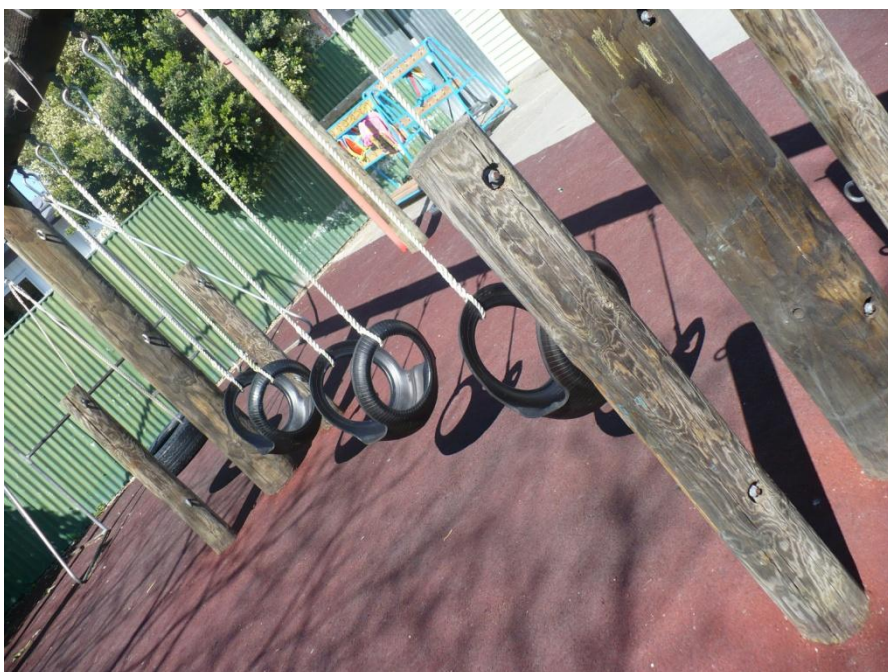
PF25 There are nappy changing facilities of rigid and stable construction that can be kept hygienically clean. These facilities are located in a designated area near to handwashing facilities and are adequately separated from areas of the service used for play or food preparation to prevent the spread of infection. The design, construction and location of the facilities ensure that;

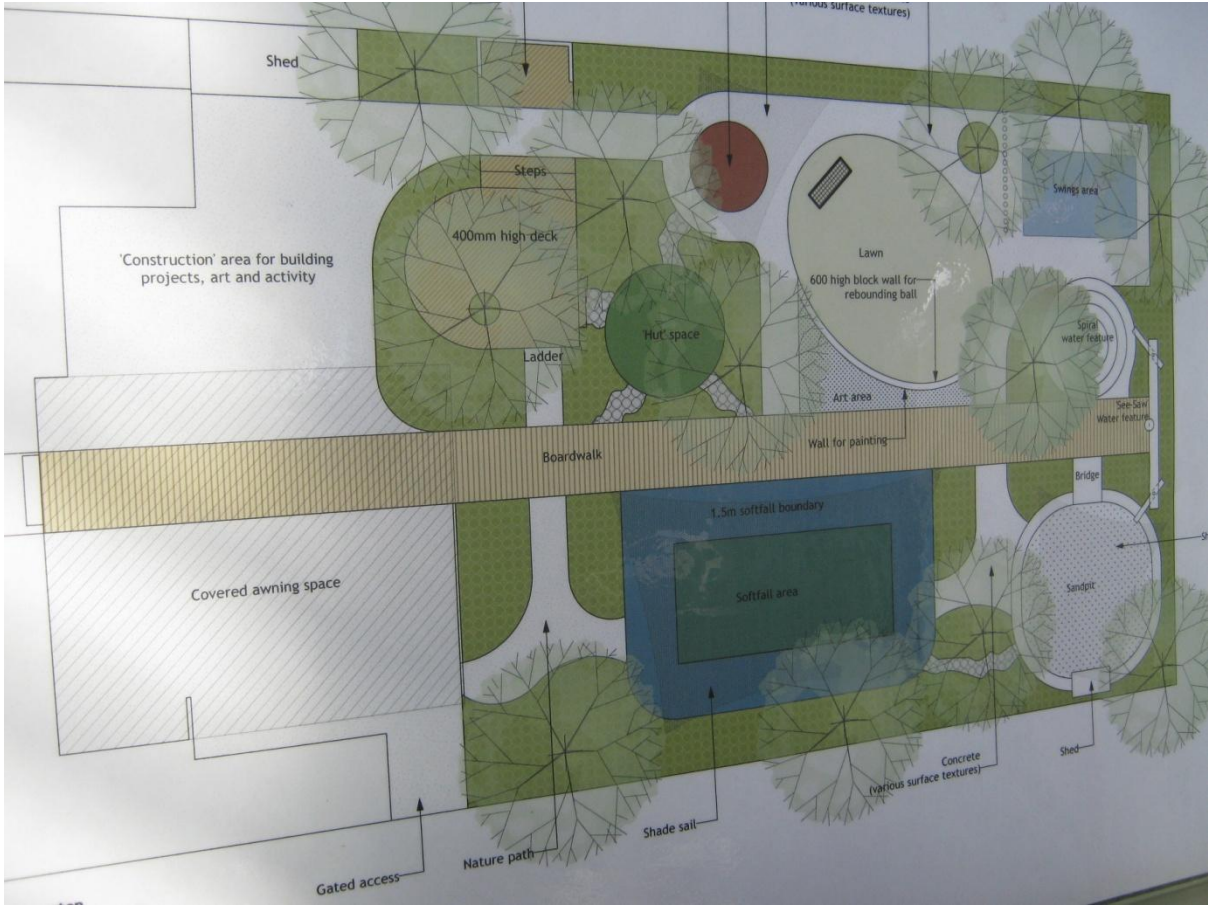
They are safe and appropriate for the age/weight and number of children needing to use them.

- Children's independence can be fostered as appropriate
- Children's dignity and right to privacy is respected
- Some visibility from another area of the service is possible and
- Occupational health and safety for staff is maximised



Playground safety – example of Burgess Matting





SEPARATE SINK FOR ART MATERIALS

The Moe Criteria states;

PF10 There are facilities (other than those required for P26) or alternative arrangements available for the preparation and cleaning up of paint and other art materials.



FOOD PREPARATION AND EATING SPACES

The Moe Criteria states;

PF 15 There is a safe and hygienic place for children attending to sit when eating

HS22 Children are supervised while eating





FOOD AND DRINK

Moe Criteria states:

HS19 Food is served at appropriate times to meet the nutritional needs of each child while they are attending. Where food is provided by the service, it is of sufficient variety, quantity and quality to meet these needs. Where food is provided by parents the service encourages and promotes healthy eating guidelines.









DRINKING WATER

Moe Criteria states:

An ample supply of water that is fit to drink is available to children at all times and older children are able to access this water independently.



SLEEP

Moe Criteria States:

PF 29 Furniture and items intended for children to sleep on (such as cots, beds, stretchers or mattresses) are of a size that allows children using them to lie flat and are of a design to ensure their safety.

PF 31 Clean individual bedding (such as blankets, sheets, sleeping bags and pillowslips) is provided for sleeping and resting children that is sufficient to

Keep them warm.





CARE OF ANIMALS

MOE Criteria states:

HS 16 Safe and hygienic handling practices are implemented with regard to any animals at the service. All animals are able to be restrained.





SAFE STORAGE OF HAZARDS

Moe Criteria states;

HS12 Equipment, premises and facilities are regularly checked for hazards to children.



EMERGENCIES

Moe Criteria States:

HS4 The premises have a current Fire Evacuation Scheme approved by the New Zealand Fire Service.

HS5 Designated assembly areas for evacuation purposes do not unnecessarily place children at further risk



CIVIL DEFENCE KIT

One container and water bottles are situated in the adult bathroom under the basin and one container is in the office beside the desk. Extra water bottles are stored in the garage.



First Aid Kit

Through door to office, above staff basin on right



CIVIL DEFENCE SUPPLIES

MOE Criteria States:

HS 7 There is a written procedure and supplies such as food, water, and spare clothes necessary for ensuring the care and safety of children attending the service in the case of an evacuation or other emergency



Moe Criteria states:

HS6 Heavy furniture, fixtures and equipment that could fall or topple and cause serious injury or damage are secured.



LAUNDRY

Moe Criteria States:

HS2 Linen used by children or adults is hygienically laundered.



CHILD PROTECTION

MOE Criteria states:

HS32 All appropriate steps are taken to protect children from exposure to inappropriate material (for example, of an explicitly sexual nature).





